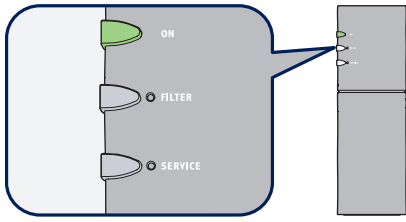


Check Indicators Lights

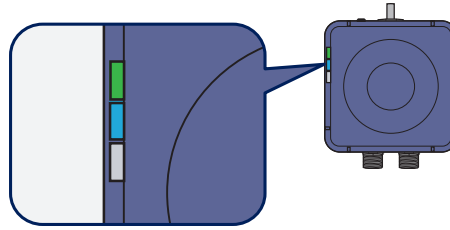
The Bluewater Spirits Green light should always be ON.



During the start of water purification, the service light will turn ON and blink.

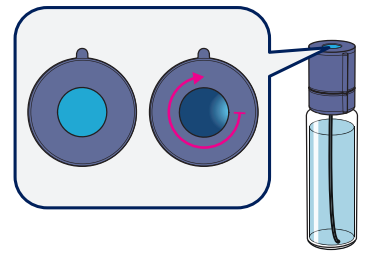
During 2.5 min flush, the top light blinks green

The Control Box Green and Blue light should always be ON.



If the Controlbox blue (middle) light is OFF or orange but the green light is ON, press it once or twice until it turns blue.

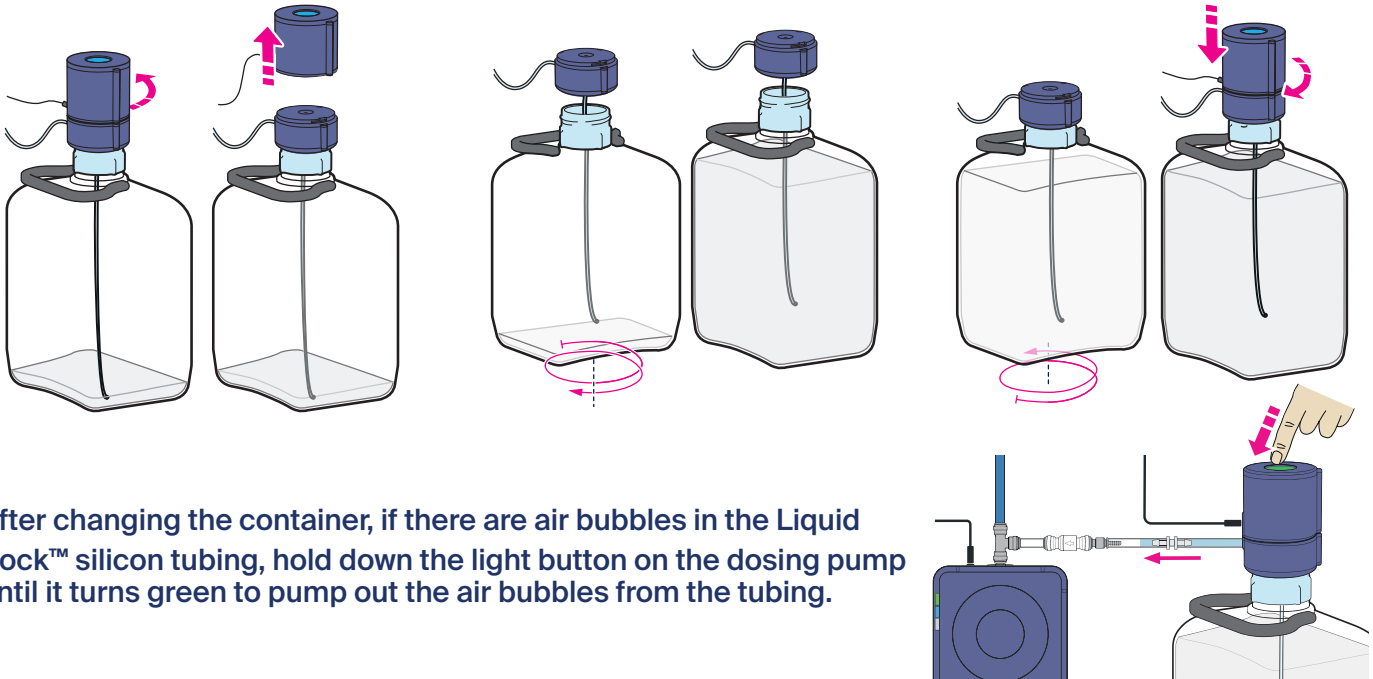
The Dosing Pumps Blue light should always be ON.



The dosing pump light should always be blue; it will rotate blue when pumping minerals into the water.

Mineral Extract Replenishment

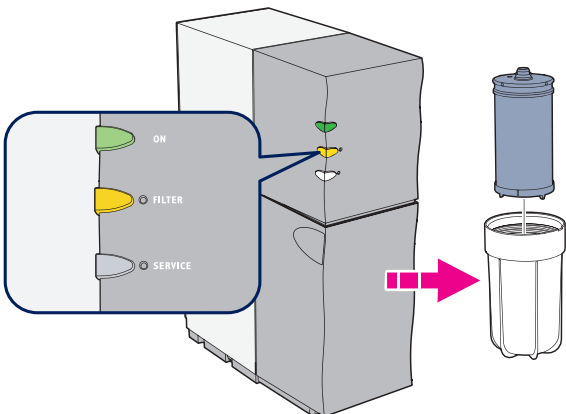
To change the mineral container when Liquid Rock™ levels are low, follow these steps.



After changing the container, if there are air bubbles in the Liquid Rock™ silicon tubing, hold down the light button on the dosing pump until it turns green to pump out the air bubbles from the tubing.

Time to Change Prefilter

The filter light will turn yellow when it's time to change the prefilter. Do so within 7 days. Refer to "Bluewater Spirit How to Use Guide"



Contact information

Support Contact

Phone:.....

Order for Mineral Extract LQR

Email:.....