

## DAILY CLEANING

Each cleaning cycle will take 15minutes. Cleaning must be carried out at least once at the end of everyday

**TOTAL CLEANING TIME:**  15mins

### YOU WILL NEED:

- Cimbali Ecocleaner Tablets (Order code: 610004217)
- Cimbali Ecojetsan Liquid (Order code: 610004159)
- Cleaning Box and fluid container.

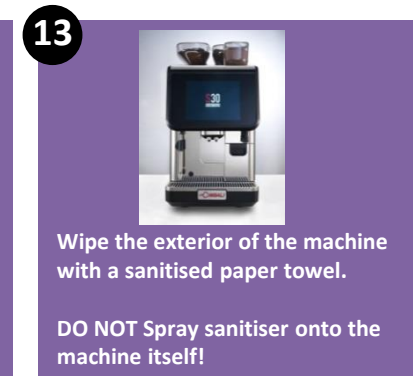
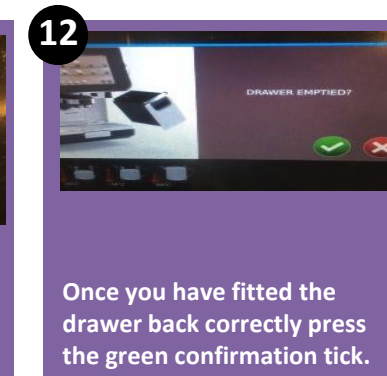
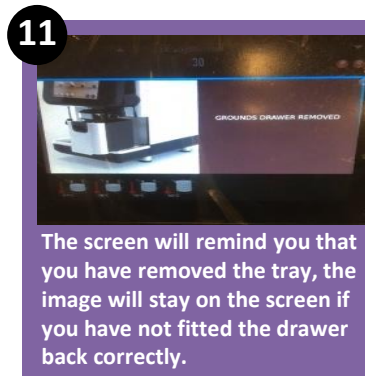
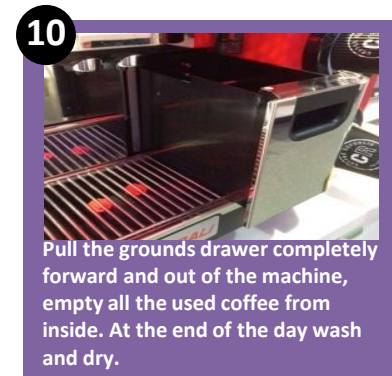
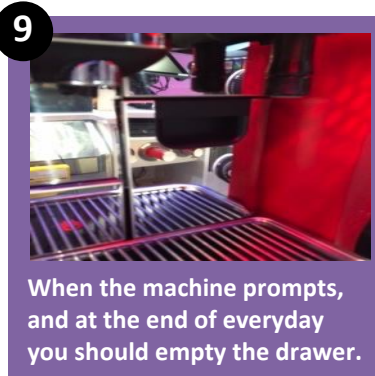
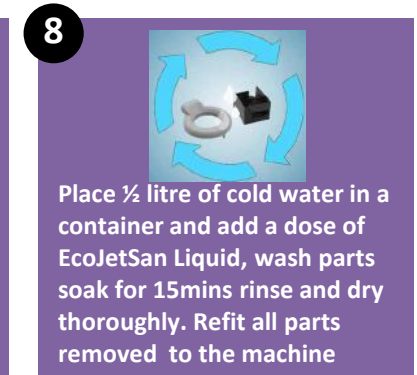
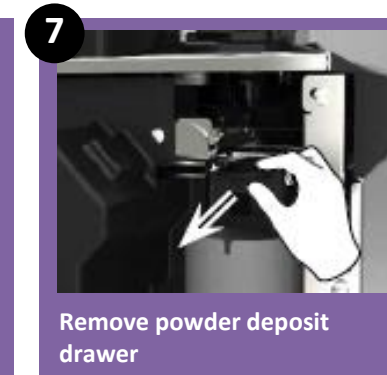
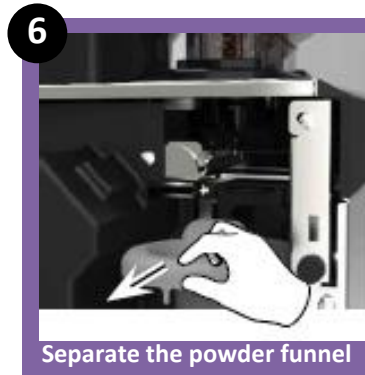
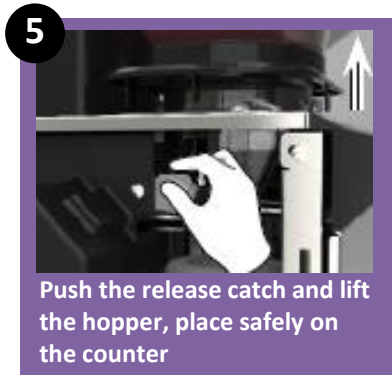
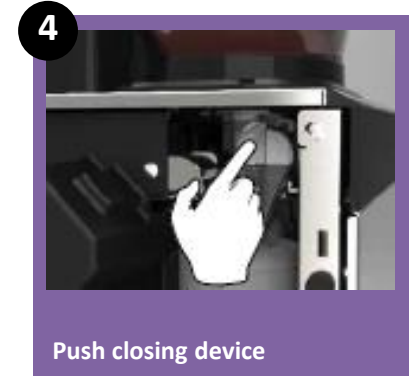
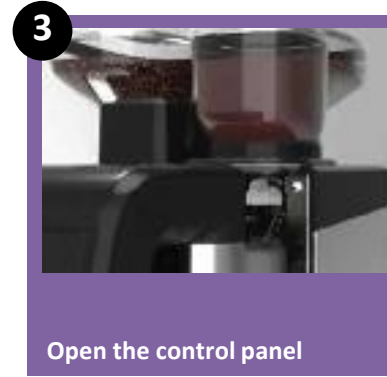
### IMPORTANT:

Ensure cleaning box is securely positioned on coffee machine

Coffee cannot be served once the cleaning cycle has started .


It **CANNOT** be stopped, even if the machine is switched off.

Cleaning should be carried out at least once everyday.




# S30 CS11 COFFEE MACHINE – CLEANING INSTRUCTIONS

**14**




Wipe the inside of the hopper with a dry cloth to remove any coffee oils in the hopper. Wash weekly. To remove the hopper, pull the slide towards yourself and lift hopper up. Reverse to refit hopper.

**15**



Remove the drip tray daily, empty any coffee waste that has built up and wash in warm water and washing up liquid, then dry completely.

**16**



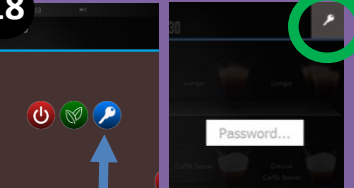
When replacing the drip tray ensure it is pushed fully in place, you should feel a slight click and fits firmly.

**17**




Find the soft touch button located behind the machine screen, in line with left hand hopper (see image 1) and press the button.

**18**



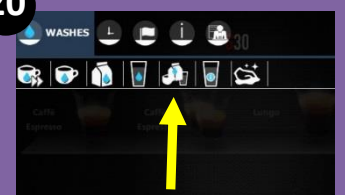
Select the Blue Key Button, then select key symbol in top right corner of next screen. You do not need to enter a code.

**19**



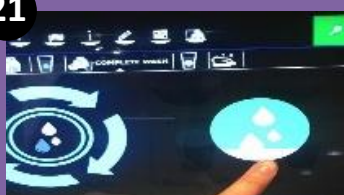
Select the water drop icon on the top left of the touch screen.

**20**




Press the 5<sup>th</sup> Icon (3 symbols) from the left it will say complete wash once selected.

**21**




Press the green wash button to start the selected clean.

**22**




Confirm the cleaning selection by pressing the green tick

**23**




Lift the cleaning flap and place 1 EcoCleaner Tablet (remove the tablet from the wrapper) into the Tablet Inlet. Ensure the cleaning flap is fully closed.

**24**



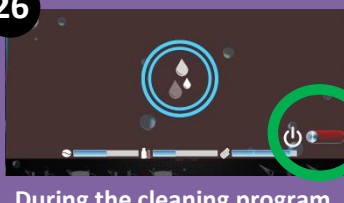
Fit the cleaning box into position under the dispense head and pour 1 dose 50ml of EcoJetSan Liquid into the container.

**25**



Connect the milk pipe from the fridge to the cleaning box, make sure you keep the filter in place. Confirm on the screen

**26**



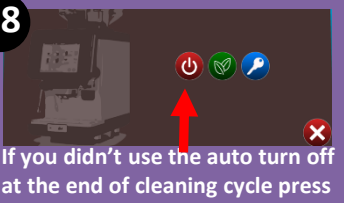
During the cleaning program you can tell the machine to power itself down by pressing the Red Power switch and making it green

**27**



After the clean has finished wipe the exterior of the milk pipe with a sanitised paper towel. Wipe the inside of fridge with sanitised paper towel

**28**



If you didn't use the auto turn off at the end of cleaning cycle press the soft touch button and select the red power button. **DO NOT USE POWER SWITCH BEHIND DRIP TRAY** To turn on press Soft Button once